



INFINITY ENGINES
Aimin' Heavy Industry And Machinery

926M, 930M, 938M

Wheel Loaders



Filiale : - 03 rue said hadjar saoula-Alger, Algérie

E-mail : infinity.engins@gmail.com

Pour toute question, appelez-nous au :

0775 56 55 36 / 0555 76 19 49 / 0795 08 66 18 / 0799 84 82 40

ou envoyez-nous un message ci-dessous.

	926M	930M	938M
Engine Model*	Cat® C7.1 ACERT™	Cat C7.1 ACERT	Cat C7.1 ACERT
Maximum Rated Gross Power:			
ISO 14396	114 kW (153 hp)	122 kW (164 hp)	140 kW (188 hp)
ISO 14396 (DIN)	114 kW (155 hp)	122 kW (166 hp)	140 kW (190 hp)
Bucket Capacity	1.3-5.0 m³ (3.5-6.5 yd³)	2.1-5.0 m³ (2.7-6.5 yd³)	2.5-5.0 m³ (3.3-6.5 yd³)
Full Turn Tip Load	7524 kg (16,587 lb)	8469 kg (18,670 lb)	10 028 kg (22,107 lb)
Operating Weight	13 050 kg (28,770 lb)	14 007 kg (30,879 lb)	16 427 kg (36,216 lb)

*Engine meets U.S. EPA Tier 4 Final/EU Stage IV emission standards.

Work Made Easy

Getting the job done.



Optimized Z-bar Linkage

The Caterpillar patented optimized Z-bar linkage combines the digging efficiency of a traditional Z-bar with integrated tool carrier capabilities for great performance and versatility.

- **Perfect Parallelism** functionality available in Fork Mode gives truly predictable performance while high tilt forces throughout the working range help you safely and confidently handle loads with precise control.
- **Visibility** to bucket corners and fork tips at ground level remain excellent while sight lines at maximum lift are improved with a Generation II lift arm design.
- **Lift higher and reach further** with optional High Lift linkage available on all three models.

Quick Loading Performance Series Buckets

Performance Series Buckets deliver up to 10% higher fill factors and better material retention for significant productivity and fuel efficiency improvements. The buckets feature a longer floor to take a bigger bite of the pile, an open throat to heap higher and curved side bars to help with material retention. This optimized shape is echoed across the General Purpose, Light Material and High Dump bucket families.



Smooth and Predictable Multi-Function Performance

M Series machines feature an electro-hydraulic control system that is governed by the Intelligent Power Management system for peak efficiency. The load-sensing, variable flow system senses work demand and adjusts flow and pressure to match the operators request.

- **Multi-Function without compromise** through dedicated hydraulic systems featuring one pump for the Intelligent Hydrastatic drive, a 2nd pump for the implements, and a 3rd pump for the steering system. Drive, Lift and Steer simultaneously with smooth predictable control. The M Series simply does what you ask it to.
- **Programmable in-cab kick-outs** are easy to set on the go for tilt, lower and lift. This feature is ideal for applications where the work cycle is repeatable allowing you to quickly return to programmed set points such as ground and level.
- **Fine tune hydro-mechanical performance** with fully adjustable 3rd and 4th function flow through the secondary display (when equipped) for a perfect marriage between machine and work tool.



Dimensions with Bucket

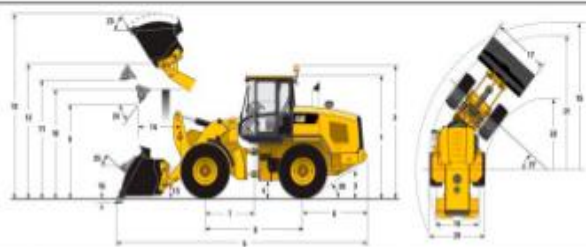


Table of dimensions for Standard Lift configuration, including height, length, width, and angles for models 926M, 930M, and 938M.

Unless otherwise noted, all Standard Lift dimensions and specifications listed are for a machine configured with the following:

Optional Equipment and Tires - Michelin specifications for Standard Lift configuration.

Operating Specifications

Operating Specifications with High Dump Buckets



Table of operating specifications for High Dump Buckets, including capacity, fill factor, bucket width, and dimensions for Pin On, Fusion, and ISO 23227 configurations.

Dimensions with Bucket

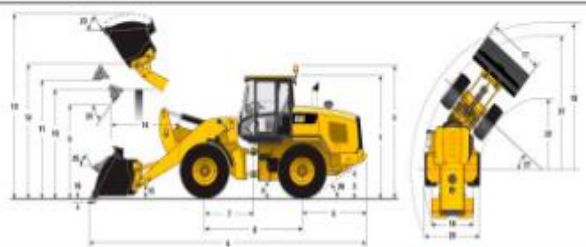


Table of dimensions for High Lift configuration, including height, length, width, and angles for models 926M, 930M, and 938M.

Unless otherwise noted, all High Lift dimensions and specifications listed are for a machine configured with the following:

Optional Equipment and Tires - Michelin specifications for High Lift configuration.

Operating Specifications

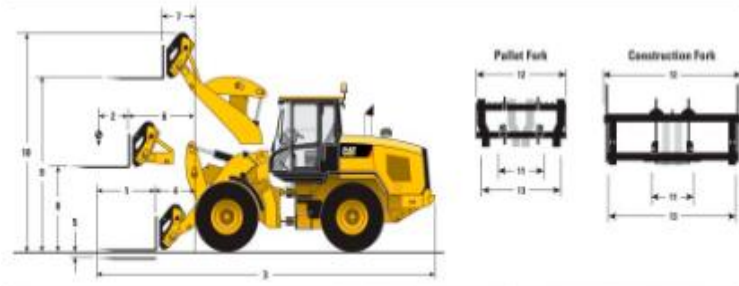
Bucket Selection Tables

High Dump Bucket Selection - Standard Lift

Large table for High Dump Bucket Selection showing material types, fill factor percentages, and tip load capacities for 926M, 930M, and 938M models.

Material density, fill factor, and counterweight options are key variables when choosing the appropriate size of the bucket. The long form and open throat design of the Performance Series Buckets along with the aggressive rack angles of the optimized linkage will maximize fill factors greater than 100% ISO standard. Refer to the expected fill factor % per material type at the top of the table and find a matching counterweight and fill factor along the side for proper bucket sizing.

Operating Specifications with Forks



	Pallet Fork - Fusion			Construction Fork - Fusion		
	S20M	S30M	S38M	S20M	S30M	S38M
1 Fork tine length	1220	49"	1220	49"	1220	49"
2 Load center	610	29"	610	29"	610	29"
3 Length: overall	7875	25'10"	7882	25'10"	7942	26'0"
4 Reach: ground	926	39"	926	39"	961	31"
5 Dig depth	47	1'9"	47	1'9"	44	1'7"
6 Reach: level arm	1589	5'1"	1589	5'1"	1617	5'3"
7 Reach: full lift	767	2'6"	767	2'6"	814	2'9"
8 Clearance: level arm	1792	5'10"	1792	5'10"	1830	6'0"
9 Clearance: full lift	3693	12'1"	3693	12'1"	3738	12'3"
10 Height: overall	4676	15'4"	4676	15'4"	4740	15'6"
11 Minimum fork spacing	300	0'11"	300	0'11"	300	0'11"
12 Carriage width	1566	5'1"	1566	5'1"	1566	5'1"
13 Maximum fork spacing	1530	5'1"	1530	5'1"	1530	5'1"
	kg	lb	kg	lb	kg	lb
Tipping load - straight, ISO 14397-1*	6756	14,895	7689	16,951	9274	20,445
Tipping load - full turn, ISO 14397-1*	5807	12,801	6377	14,499	7909	17,437
Operating weight	12,799	28,129	13,671	30,140	13,932	35,123
Rated load % of full turn tip						
50% of tip: SAE J1197**	2903	6,410	3288	7,249	3955	8,718
60% of tip: rough terrain EN474-3**	3484	7,680	3946	8,699	4746	10,462
80% of tip: firm and level EN474-3**	4645	10,240	5201	11,599	6327	13,949
	4133	9,113	4709	10,382	5708	12,584

*Full compliance to ISO 14397-1 (2007) Sections 1 thru 6, which requires 2% verification between calculation and testing.
**Full compliance to EN474-3 and SAE J1197.

Operating Specifications with Material Handling Arm

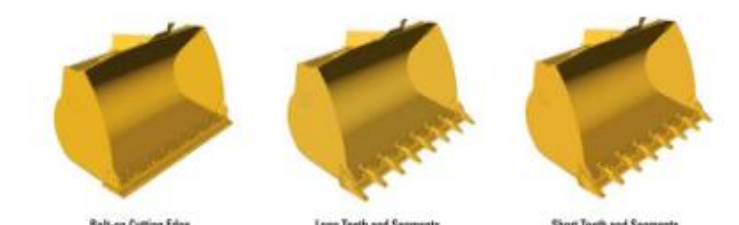


	Material Handling Arm - Fusion		
	S20M	S30M	S38M
1	2113 mm	6'11"	2113 mm
2	2333 mm	7'7"	2362 mm
3	2919 mm	9'6"	2943 mm
4	3505 mm	11'6"	3525 mm
5	5257 mm	17'2"	5257 mm
6	5568 mm	18'3"	5635 mm
7	6112 mm	20'0"	6204 mm
8	6657 mm	21'9"	6754 mm
9	3354 mm	11'0"	3403 mm
10	3727 mm	12'2"	3775 mm
11	4527 mm	14'9"	4573 mm
12	5327 mm	17'5"	5376 mm
13	1854 mm	6'0"	1854 mm
14	863 mm	2'9"	863 mm
15	1045 mm	3'5"	1089 mm
16	1276 mm	4'2"	1324 mm
17	1507 mm	4'11"	1559 mm
18	1975 mm	6'5"	1983 mm
19	2310 mm	7'6"	2316 mm
20	3076 mm	10'1"	3081 mm
21	3842 mm	12'7"	3846 mm
22	5730 mm	18'9"	5762 mm
Operating weight	12,626 kg	27,835 lb	13,538 kg
Rated load* (30% of full turn tip** SAE J1197)			
Fixed tab (9)	2081 kg	4,598 lb	2356 kg
Minimum extension (8)	1998 kg	4,205 lb	2199 kg
Middle extension (11)	1618 kg	3,567 lb	1832 kg
Maximum extension (12)	1405 kg	3,097 lb	1590 kg

*Full compliance to ISO 14397-1 (2007) Sections 1 thru 6, which requires 2% verification between calculation and testing.
**Full compliance to EN474-3 and SAE J1197.

Supplemental Specifications

Ground Engagement Options



Change with Ground Engagement option compared to Bolt-on Cutting Edge	S20M		S30M		S38M	
	Long Teeth and Segments	Short Teeth and Segments	Long Teeth and Segments	Short Teeth and Segments	Long Teeth and Segments	Short Teeth and Segments
Dig depth	+12	+0.5"	+5	+0.2"	+11	+0.4"
Length: overall	+146	+5.7"	+121	+4.8"	+146	+5.7"
Dump clearance	-103	-4.1"	-82	-3.2"	-104	-4.1"
Rough	+104	+4.1"	+89	+3.3"	+103	+4.1"
	kg	lb	kg	lb	kg	lb
Tipping Load - straight	-148	-325	-142	-311	-150	-329
Tipping Load - full turn	-145	-318	-139	-305	-146	-322
Breakout force	-123	-266	-115	-254	-121	-266
Operating weight	+120	+264	+116	+255	+120	+264

926M, 930M, 938M Standard and Optional Equipment

Standard Equipment

Standard equipment may vary. Consult your Cat dealer for details.

- POWER TRAIN**
 - Axle seal guards
 - Auto idle shut down feature
 - Cat C7.1 ACERT engine
 - Power Modes (Standard and Performance)
 - Power by Range (High Power in Range 4)
 - Turbocharged and aftercooled
 - Diesel particulate filter (F) for Life
 - Coolant protection to -34° C (-29° F)
 - Differential lock in front axle
 - Dry type air cleaner
 - Enclosed wet disc full hydraulic brakes
 - Fuel priming pump, automatic
 - Fuel water separator
 - Hydraulically driven demand cooling fan
 - Intelligent hydrostatic transmission
 - Power train modes
 - Directional Shift Aggressiveness
 - Rimpull control, adjust wheel torque
 - Creeper control, adjust ground speed
 - Lubed for life driveshafts
 - Parking brake, electric
 - Wide spaced 6 fins per inch cooling package
 - S-O-S™ sampling ports
 - Throttle lock and maximum speed limiter
- HYDRAULICS**
 - Automatic lift, lower and tilt kickouts
 - Bucket and Fork Modes, adjustable in-cab
 - Cylinder dumping at kickout and end stops
 - Fine Mode control in Fork Mode
 - Hydraulic Response setting
 - Load sensing hydraulics and steering
 - Seat-mounted hydraulic joystick controls
- ELECTRICAL**
 - Alternator, 115-amp, heavy duty
 - 12V power supply in cab (2)
 - Batteries, 1,000 CCA (2) 24 volt system
 - Back-up alarm
 - Emergency shutdown switch
 - Heavy duty gear reduction starter
 - Product Link PRO with subscription
 - Remote jump start port
 - Resettable circuit function breakers
- OPERATOR ENVIRONMENT**
 - 75 mm (3 in) retractable seat belt, with audible alarm and indicator
 - Automatic temperature control
 - Cab, enclosed and pressurized
 - Cap Insiders
 - External heated mirrors with lower parabolic
 - Ground level door cut release
- OTHER STANDARD EQUIPMENT**
 - Large-access enclosure doors
 - Parallel lift loader linkage
 - Recovery hitch with pin
 - Remote mounted lubrication points
 - Lockable compartments and enclosures
- Gauges**
 - Digital hour, odometer, tachometer, ground speed and direction indicator
 - Engine coolant temperature gauge
 - Fuel and Diesel Exhaust Fluid level
 - Hydraulic oil temperature gauge
 - Hydraulic control lockout
 - Interior cab lighting, door and dome
 - Interior mirror view mirrors (2)
 - Lunch box storage
 - Operator warning system indicators
 - Radio ready speakers
 - Rear window defrost, electric
 - Seat-mounted controls, adjustable
 - Sliding glass on the side windows
 - Column mounted multi function control - lights, wipers, turn signal
 - Suspension seat, fabric
 - Tilt and telescopic steering wheel
 - Wet arm wiper/washer, front and rear

Optional Equipment

Optional equipment may vary. Consult your Cat dealer for details.

- Antifreeze/coolant, extended-life
- Auto lube, integrated in secondary display
- Auxiliary flow, third and fourth function
- Axles, differential, limited slip, rear
- Beacon light, strobe
- Cab, deluxe (standard in Europe):
 - Automatic blower control
 - Electrically adjustable lateral mirrors (2)
 - LED interior lighting
 - Secondary display to adjust settings
 - Ride control adjustable speed activation
 - Preventative maintenance reminders
 - Integrated help function (26 languages)
 - Sunscreen, front and rear
 - Camera, rearview (standard in Europe)
 - Cold start package:
 - Ether starting aid, block heater and additional batteries, 1,000 CCA (4 total)
- Counterweight, (heavy and lighter)
- Coupler, (Fusion and ISO 2372)
- Debris packages (low, medium, high)
- Fenders (extended cover and full coverage)
- Guards
 - Power train, (lower, side, driveshaft and crankcase)
 - Windshield and lights
 - Cylinders, tilt and steering
 - Rear radiator, heavy duty
- Linkage, high lift
- Lights, auxiliary, halogen or LED with engine compartment lights
- Object Detection
- Radio packages:
 - Radio ready with Bluetooth
 - Radio, AM/FM with Bluetooth and clock
 - Radio, AM/FM with CD player, deluxe, weatherhead, Bluetooth and clock
- Seats
 - Deluxe seat - fully adjustable fabric air suspension seat with mid seat backrest
 - Premium seat - fully adjustable leather and fabric air suspension with high backrest and air lumbar support. Heated and cooled bottom cushion and backrest.
- Steering:
 - Dual mode and Secondary
- Tires:
 - Bias ply, 17.5, 20.5-23, Skidder
 - Radial, 17.5, 20.5, 23.5, 550R5, 600R5, 650R5 R23
 - Flexper, 620R5, 750R5 Agriculture
- Work tools

La première plateforme de location de matériel
Pour Les Professionnels du BTP et de l'Industrie.

Filiale : - 03 rue said hadjar saoula-Alger, Algérie
E-mail : infinity.engins@gmail.com
Pour toute question, appelez-nous à :
0775 56 55 36 / 0555 76 19 49 / 0795 08 66 18 / 0799 84 82 40

